



Accelerate your workflow

Holter Monitoring System, Release 2.9
DigiTrak XT

PHILIPS

Designed to meet your every need



Philips Holter Monitoring System is designed to simplify life for you and your patients. It provides all the tools you need to record, analyze and diagnose ECG data—quickly, accurately and confidently.

And all this comes with the backing of Philips Healthcare, the company you can trust to deliver and support visionary solutions for cardiology.

Clinicians

Choose workflow simplification, seamless connectivity and clinical accuracy for cardiology and electrophysiology.

- Ensure patient compliance with the slim, lightweight DigiTrak XT recorder.
- Configure 24-hr to 7-day recordings to meet every patient's need.
- Review ECGs in the familiar 12-lead format using EASI lead system.
- Review, edit and export reports from anywhere.
- Safely email results with encrypted reports.

Technicians

Ensure noise-free hook-up every time quickly and easily.

- Get proven artifact reduction with EASI lead placement and large display with onscreen lead map indicator.
- Download ECG files fast, typically in less than 90 seconds.
- Personalize your software with your preferred viewing and editing settings.
- Get superior scan quality with the fast, flexible and proven Zymed Smart Tools.
- Create, edit and export customized reports.

Administrators

Increase your productivity and manage your Holter services more cost-effectively with the power of the Zymed algorithm.

- Go paperless with export options to an EMR, HIS and TraceMasterVue.
- Grow your operations with Philips Link Network.
- Simplify QA with Zymed Smart Tools and audit logs.
- Protect your investment with the 2-year warranty on the DigiTrak XT.
- Ensure patient data security with non-removable memory, data encryption and secure data transfer.

Scanning software that is so easy to use, yet so powerful

Philips Holter Monitoring System can scale to meet your needs, no matter how large or small. The Zymed analysis software includes a wide range of powerful tools, yet it streamlines your basic workflow to just three steps:

Download ECG files in less than 90 seconds.

Scan in minutes using any of four distinct styles, all powered by the exclusive Zymed algorithm.

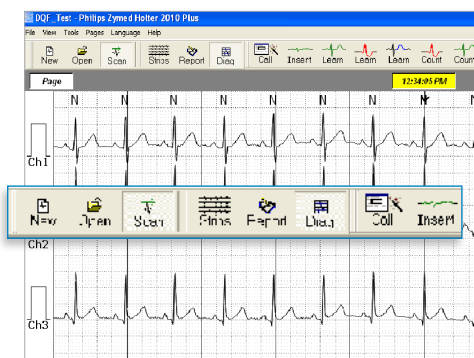
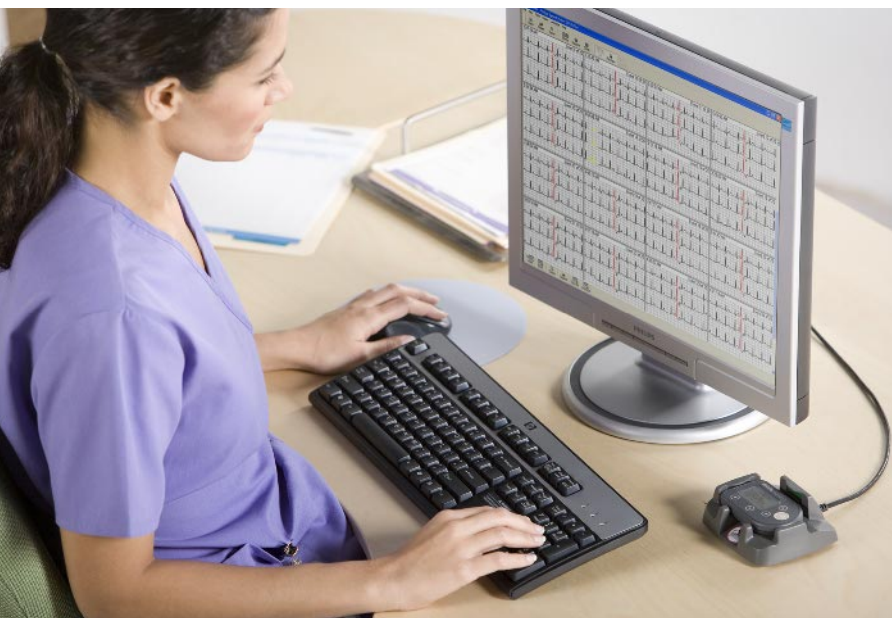
Create accurate, customized reports and store them in your preferred EMR, HIS or TraceMasterVue system.

Depending on the software you select, you can take advantage of a wide range of powerful tools:

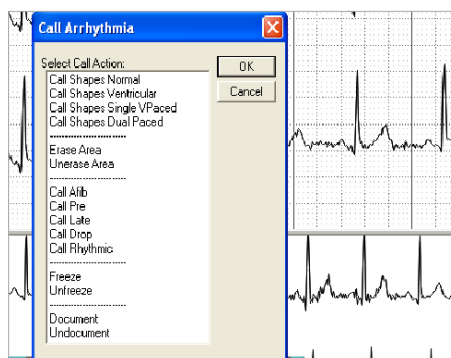
- Personalize your screen and navigation bars to meet your specific needs.
- Simplify your most complex AF and pacing scans with single-click editing, Zymed Smart Tools and advanced toolbars.
- Use Philips exclusive Quick Scan and get the automation of retrospective scanning combined with the interactivity of prospective scanning.
- Edit directly from the report and include strips automatically.
- Review ECGs in the familiar 12-lead format at any point of any scan using EASI.
- Feel confident in the clinical accuracy of your reports. The Zymed algorithm has proven accuracy verified with over 30 different databases, including the MIT and AHA databases.
- Edit reports anywhere using the Report Viewer/ Editor, standard on every system.
- Assess AF burden more easily with enhanced atrial fibrillation reporting.

Advanced capabilities include:

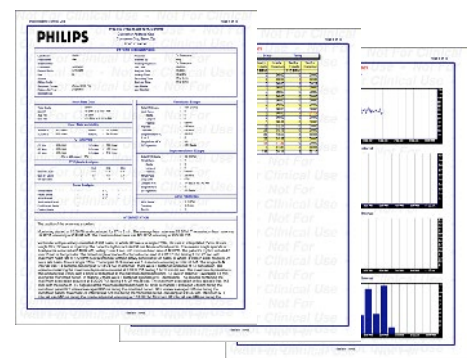
- Heart rate variability with both time and frequency domain analysis.
- 3-channel, 12-lead ST segment analysis with 3D graphics that provide multiple views of the heart.
- Accurate QT interval analysis with options for uncorrected QT interval analysis or correction by all the industry-standard correction algorithms.



Personalize your screen and navigation bars.



Simplify complex scans with Zymed Smart Tools.

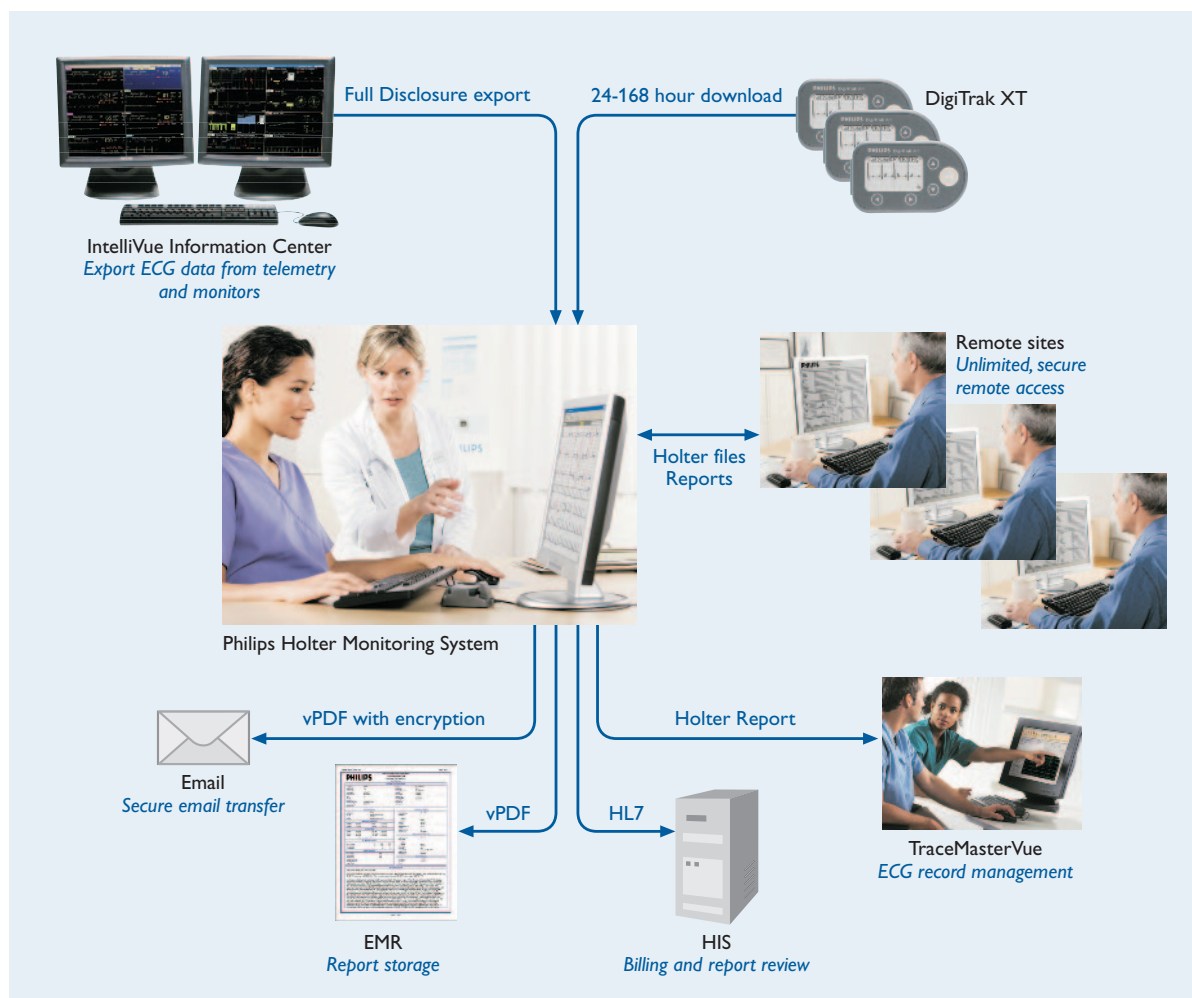


Create accurate, customized reports.

Connect and save – seamless connectivity

Philips offers connectivity options that make it simple for scanning services, hospitals, and physicians' offices to work efficiently and share information:

- Export Holter reports to an EMR, HIS or TraceMasterVue.
- Export Holter reports in HL7 format or as a Vector PDF with encryption for secure email transfer.
- Analyze Holter ECG files centrally with the open, secure and scalable Philips Link Network. The Link Network with unlimited remote sites provides secure, reliable, automatic data transfer.
- Discharge patients more quickly and reduce costs by taking advantage of the exclusive interface between the IntelliVue Information Center and Holter System. This allows you to export ECG data from Philips telemetry and patient monitors to the Holter System for generation of detailed reports.



DigiTrak XT Recorder— smart and innovative

On-screen lead map and EASI lead placement for artifact-free hookup

EASI derived 12-lead standard on all recorders

Pacemaker detection with sensitivity adjustment

Lightest recorder with large onboard display, just 2.2 oz (62 g)

Extra-slim design for patient comfort

Swivel belt clip and pouch for easy wearability

Recording up to 7 days on a single AAA battery

Water-resistant case and 2-year warranty

Non-removable memory prevents accidental data loss and enhances data security



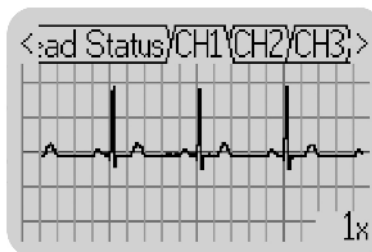
Automatic Power On self-test with onscreen status indicator guarantees reliable recording

Simple navigation buttons with tactile response for fast setup

Large, raised Event button easy for patients to find by feel

This unit is configured for:
 First Name: JOE
 Last Name: SMITH
 Patient ID: 0123456789
 Press < and ← to accept

Streamline your workflow by pre-configuring and previewing patient demographics.



Large display for each channel ensures artifact-free setups and avoids retests.



Fast downloads typically take less than 90 seconds. Our dual dock accepts DigiTrak XT and DigiTrak Plus recorders.

Which Philips Holter solution is right for you?

Standard features		EASI derived 12-lead ECG, retrospective scanning, custom tool bars, Zymed Smart Tools, advanced editing tools, automatic strip documentation, HRV time domain, 3-channel ST and QT analysis, pacemaker display, superimposition of templates, full disclosure, audit logging, vPDF report export						
Features by system	2010 Plus with HL7 export	2010 Plus with export to TraceMasterVue	2010 Plus	1810 Technical/Administrative Suites	1810 Technical/Cardiology Suites	1810 Technical Suites	1810 Basic	
Clinical	Retrospective scanning	•	•	•	•	•	•	With 30 minute ECG preview
	Quick scan	•	•	•	•	•	•	
	Page scanning	•	•	•	•	•	•	
	Superimposition scanning	•	•	•	•	•	•	
	HRV frequency domain	•	•	•	•	•	•	
	Online editing / auto stops	•	•	•	•	•	•	
	12-lead ST, 3D reporting	•	•	•	•	•	•	
	Pacer analysis	•	•	•	•	•	•	
	Operator-created rule sets	•	•	•	•	•	•	
	Comprehensive algorithm rules	•	•	•	•	•	•	
Administrative	Color laser printer support	•	•	•	•	•	•	
	Customer logo support	•	•	•	•	•	•	
	User report customization	•	•	•	•	•	•	
Connectivity	vPDF report export with encryption	•	•	•	•	•	•	
	HL7 report export	•	•	•	•	•	•	
	Report export to TraceMasterVue		•	•	•	•	•	
	Link Network capability	•	•	•	•	•	•	
	Remote site support	Unlimited	Unlimited	Unlimited	Unlimited	Two	Two	

Minimum system requirements

Software

Operating system: Microsoft Vista, Windows XP Pro, Windows 2003 server

Hardware

Processor: Intel Pentium III, 500 MHz
 Memory: 256 MB
 Hard Disk: 10 GB
 USB: 1.2 or greater
 CD ROM: 32x Drive
 I/O ports: 2 USB

Display

Size: 17" minimum
 Type: high resolution, Super VGA color
 Resolution: 16-bit minimum, 1024 horizontal x 768 vertical

Printer

Laser printer with minimum 300 x 300 dpi

Regulatory and warranty

Certification: CE marked
 Warranty: DigiTrak XT recorder – 2 years, Holter software – 90 days



© 2008 Koninklijke Philips Electronics N.V.
 All rights are reserved.
 Philips Medical Systems Nederland B.V. reserves the right to make changes in specifications and/or to discontinue any product at any time without notice or obligation and will not be liable for any consequences resulting from the use of this publication.

For further details, please contact your local Philips sales representative.

Philips Healthcare is part of Royal Philips Electronics

www.philips.com/healthcare
 healthcare@philips.com
 fax: +31 40 27 64 887

Printed in The Netherlands
 4522 962 31461/860 * FEB 2008

Philips Healthcare
 Global Information Center
 P.O. Box 1286
 5602 BG Eindhoven
 The Netherlands